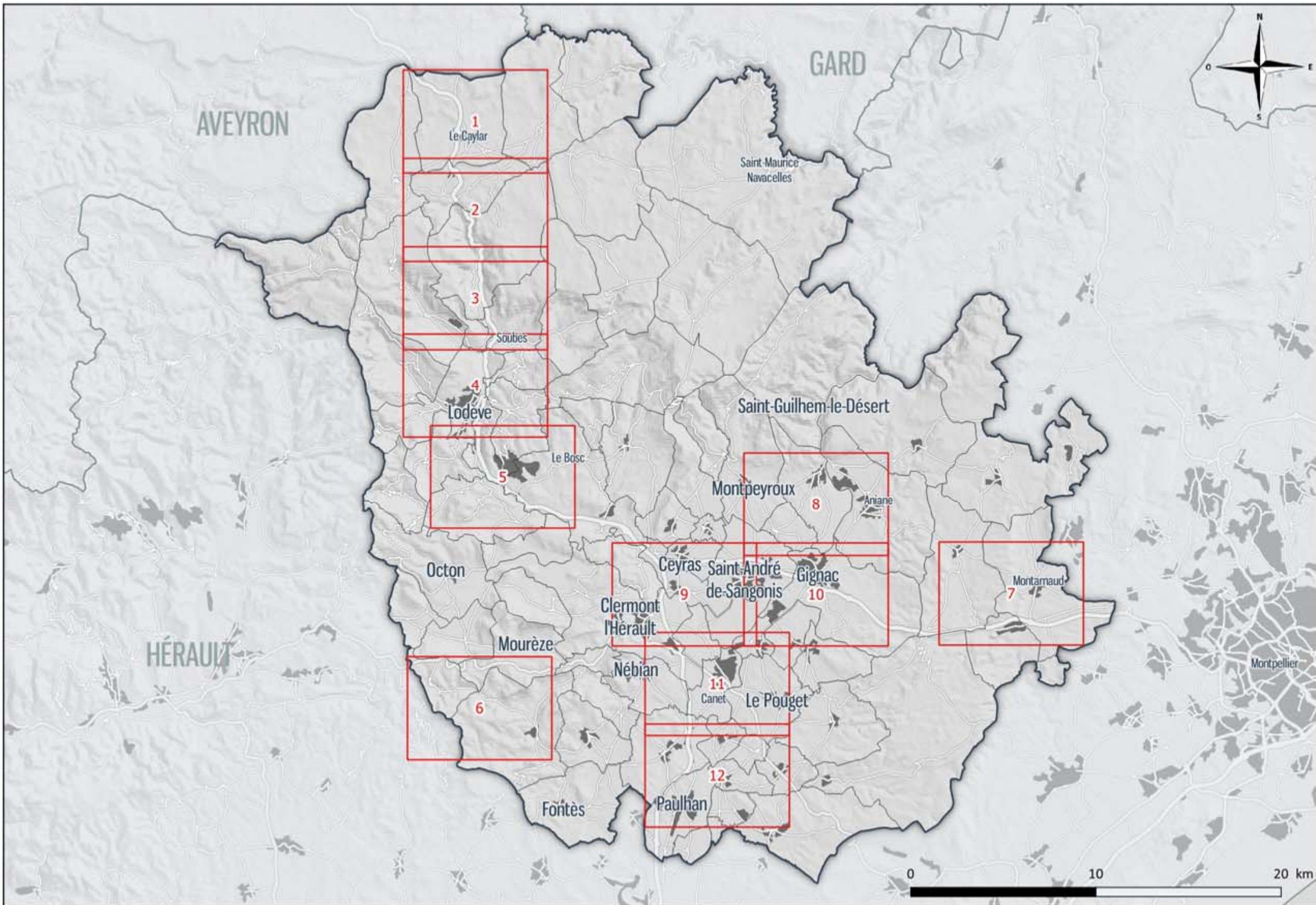





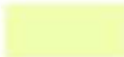
Document d'Orientations et d'Objectifs (DOO) **ANNEXE 2 (Zoom TVB)**







**Version approuvée
13 Juillet 2023**



Espaces d'intérêt

-  Trame bleue
-  Réservoirs de biodiversité de niveau 1 : Espaces à très fort intérêt écologique de la trame verte
-  Réservoirs de biodiversité de niveau 2 : Espaces à forte valeur écologique de la trame verte
-  Espaces de nature ordinaire

Corridors identifiés dans la Trame Verte et Bleue

-  Corridors à préserver
-  Corridors A75 à restaurer
-  Corridors liés aux cours d'eau à restaurer
-  Autre corridor à restaurer

Contraintes anthropiques majeures

-  Espaces urbanisés
-  Autoroutes
-  Routes départementales principales
-  Routes départementales secondaires
-  Voies ferrées

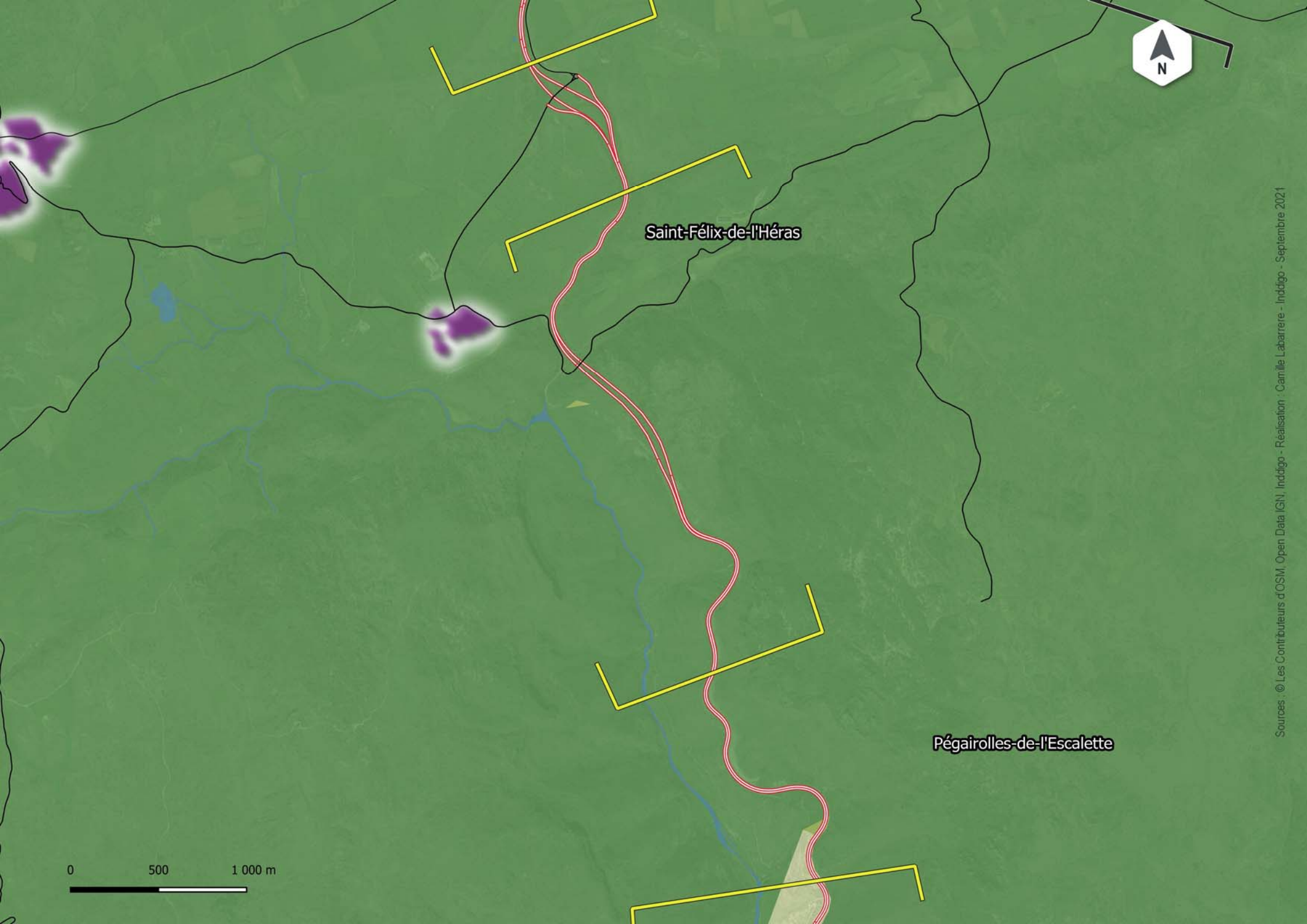


Le Cros

Le Caylar

0 500 1 000 m





Saint-Félix-de-l'Hérès

Pégairolles-de-l'Escalette



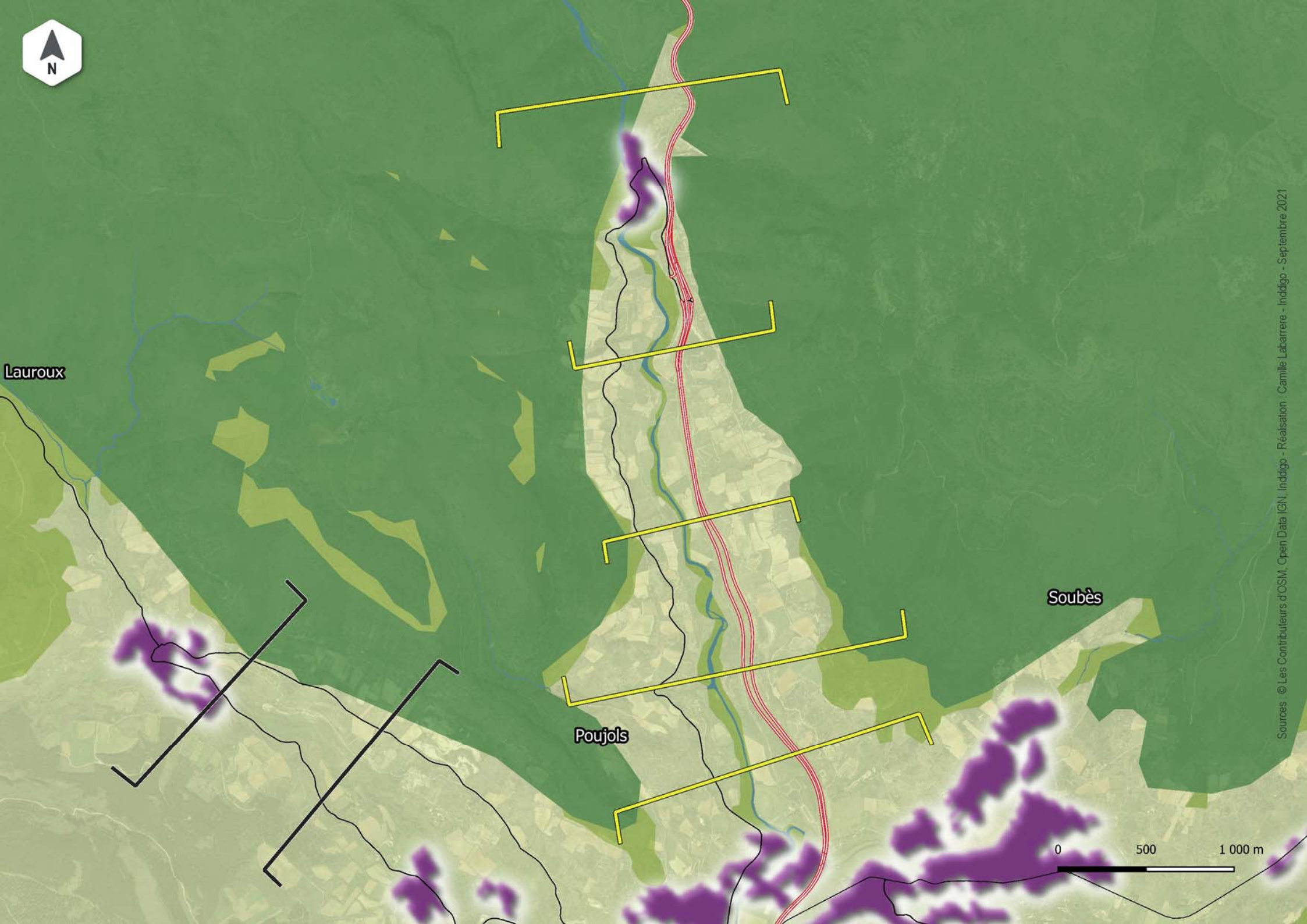


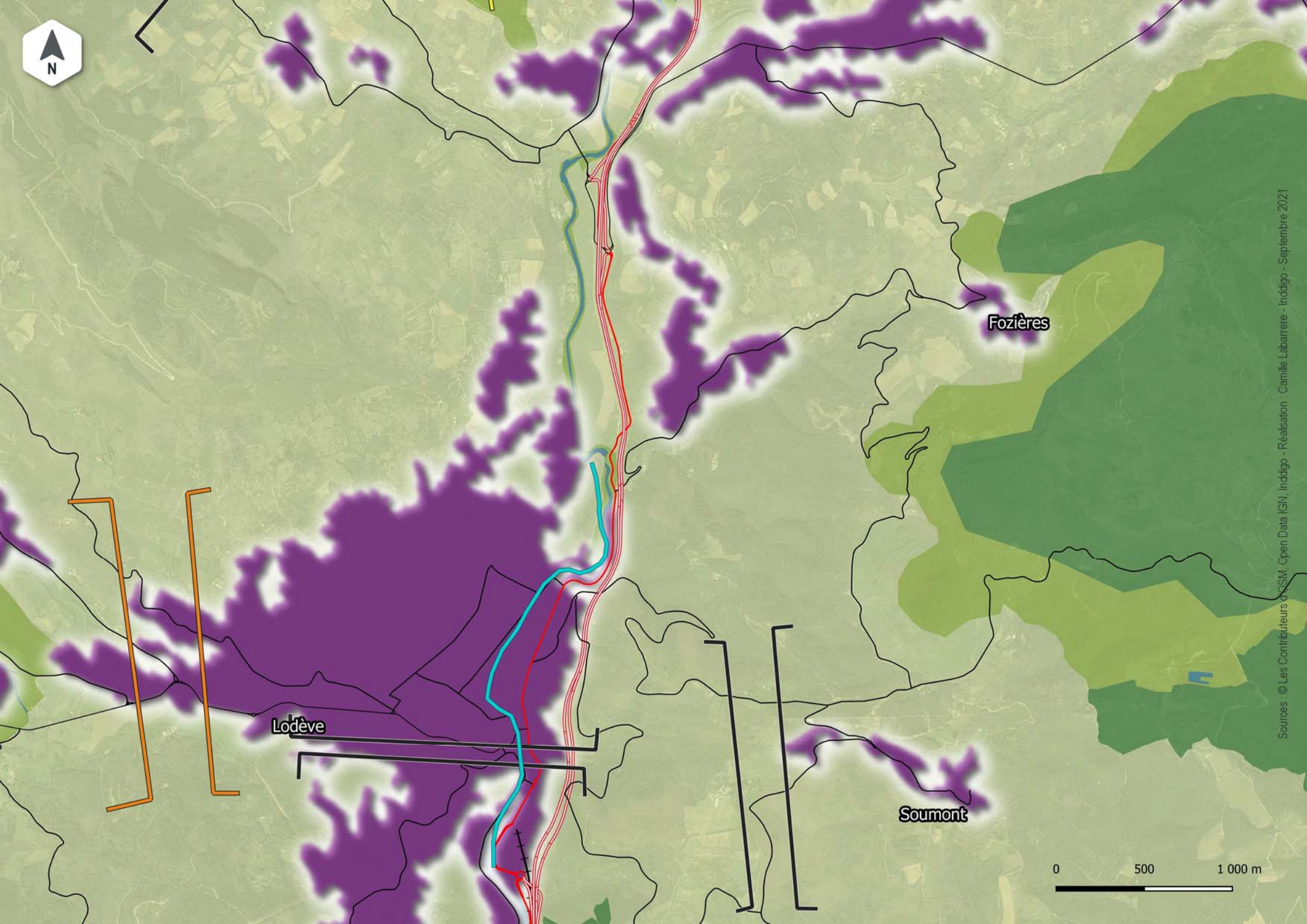
Lauroux

Soubès

Poujols

0 500 1 000 m

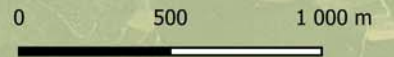




Lodève

Fozières

Soumont





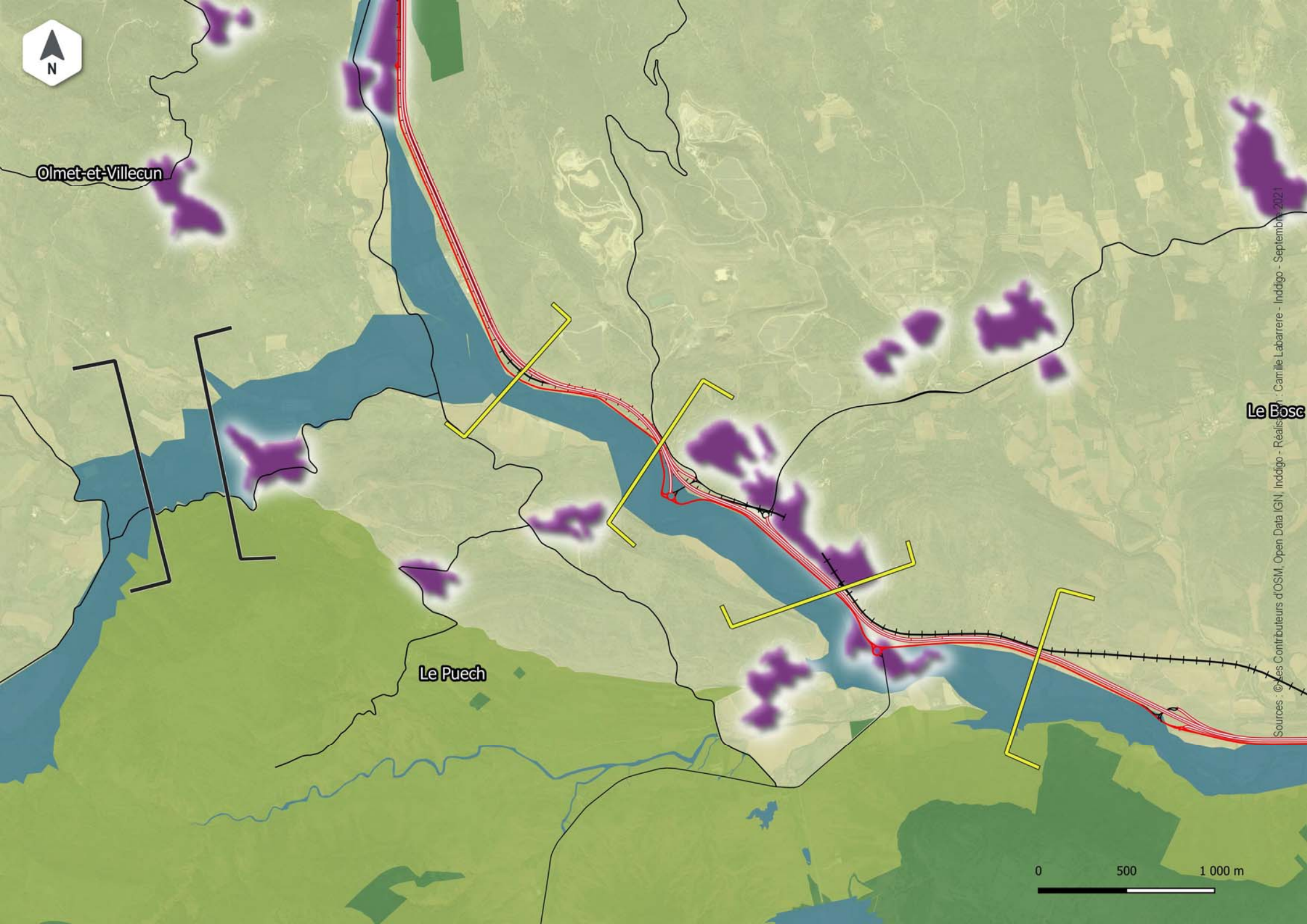
Olmet-et-Villecun

Le Puech

Le Bosc



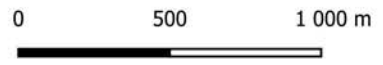
Sources : © Les contributeurs d'OSM, Open Data IGN, Inddigo - Réalisation : Camille Labarrère - Inddigo - Septembre 2021





Valmascle

Cabrières

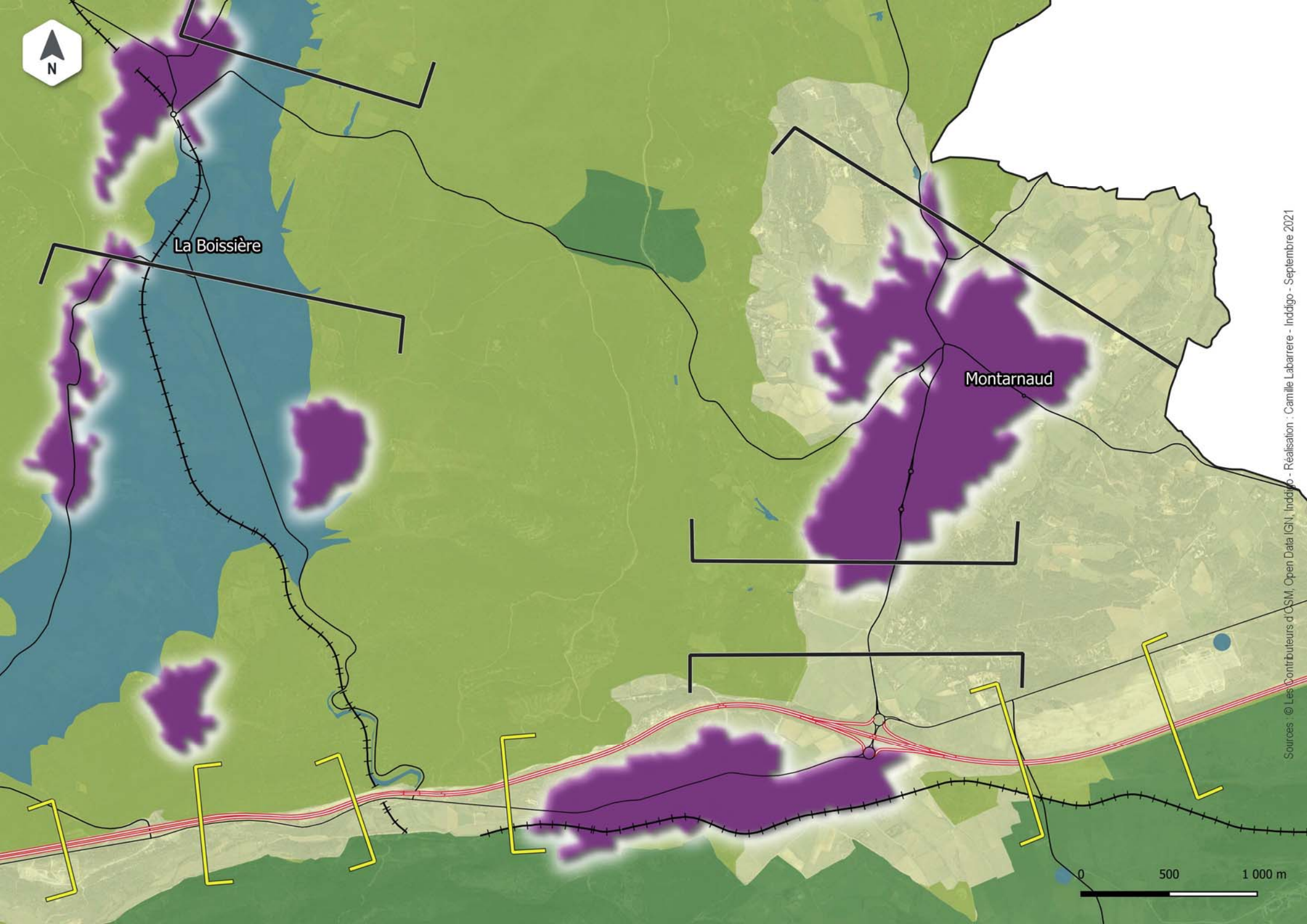


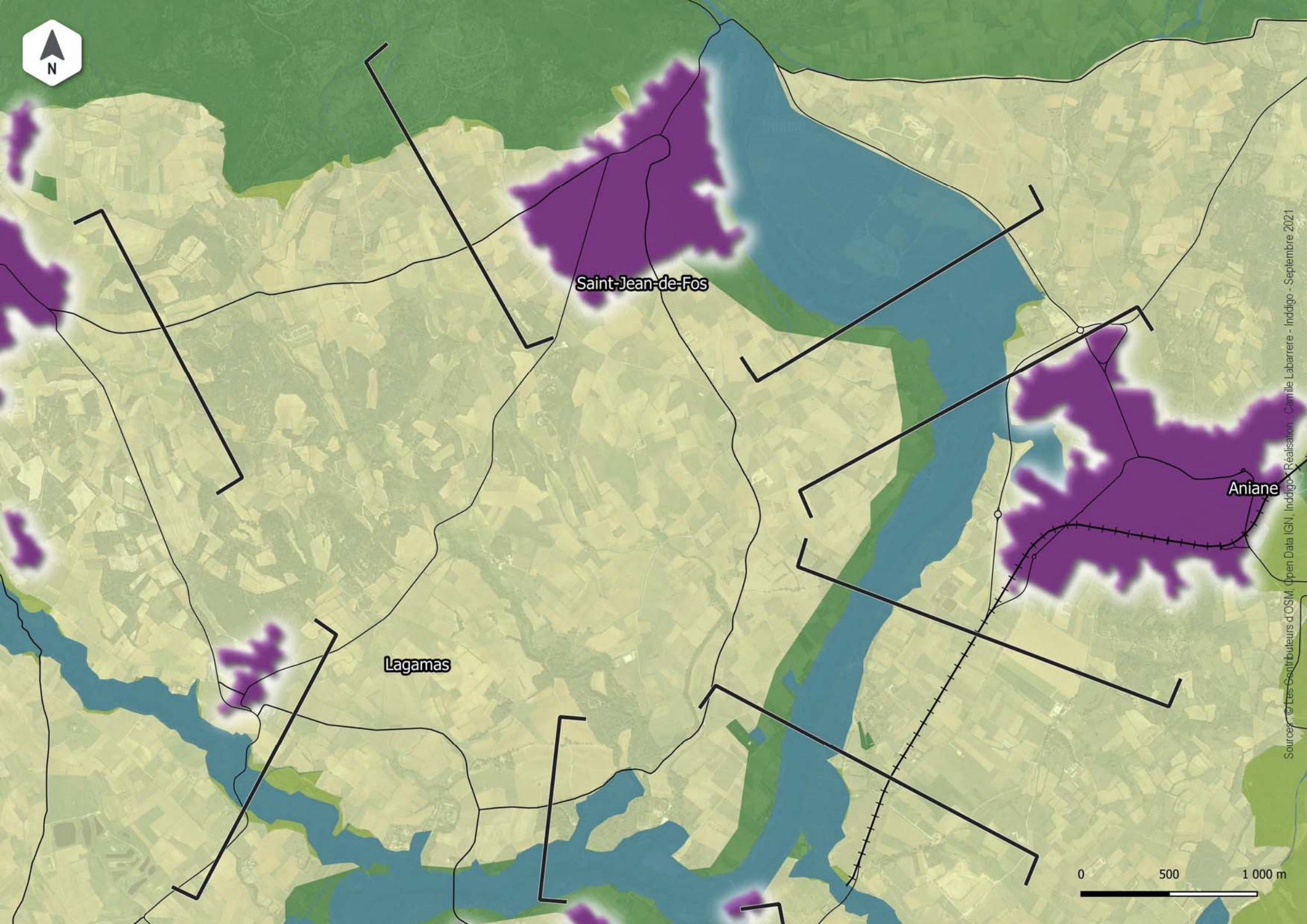


La Boissière

Montarnaud

0 500 1 000 m

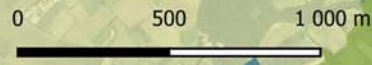




Saint-Jean-de-Fos

Lagamas

Aniane





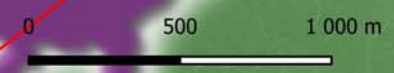
Lacoste

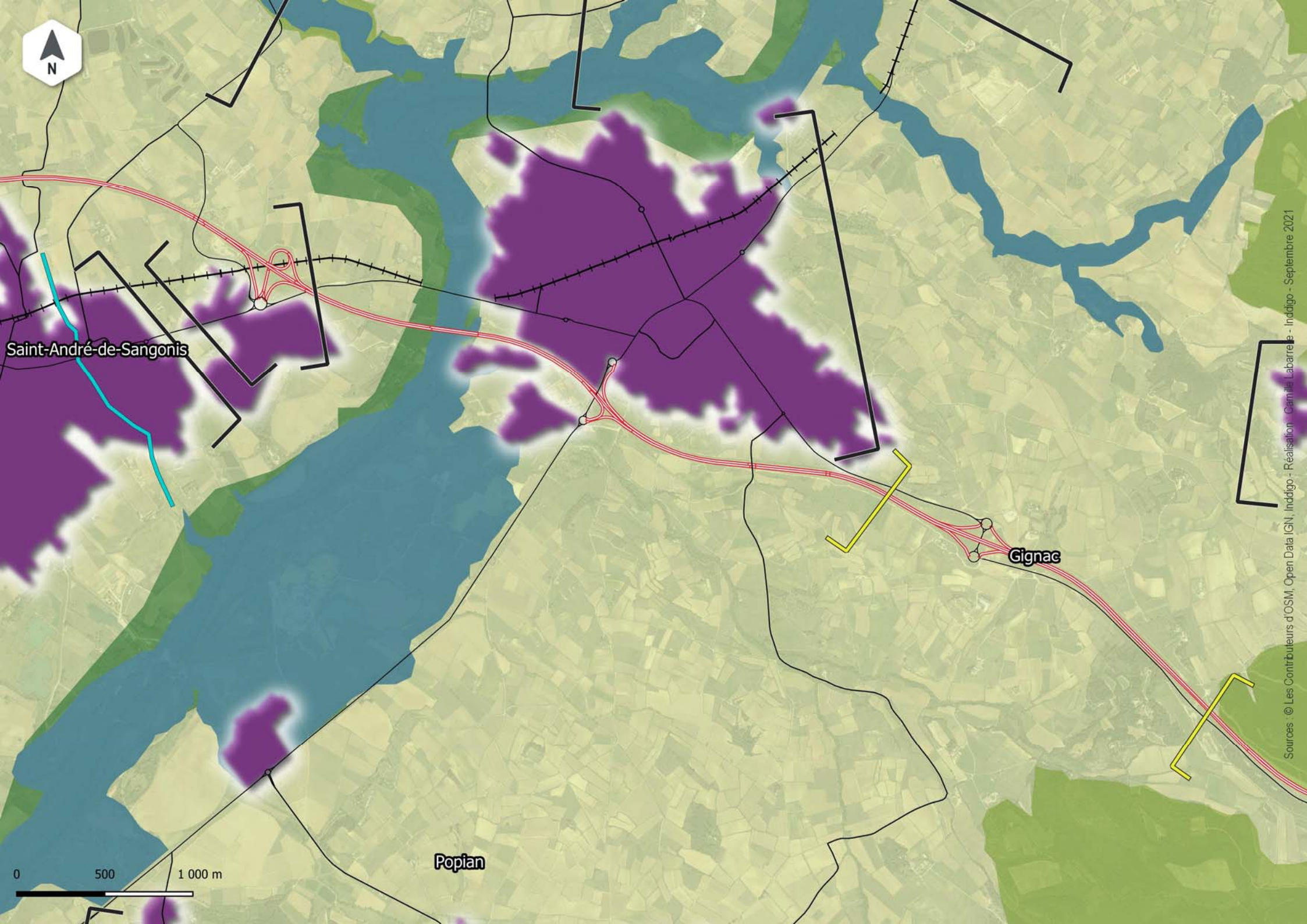
Saint-Félix-de-Lodez

Ceyras

Saint-André-de-Sangonis

Brignac





Saint-André-de-Sangonis

Gignac

Popian

0 500 1 000 m

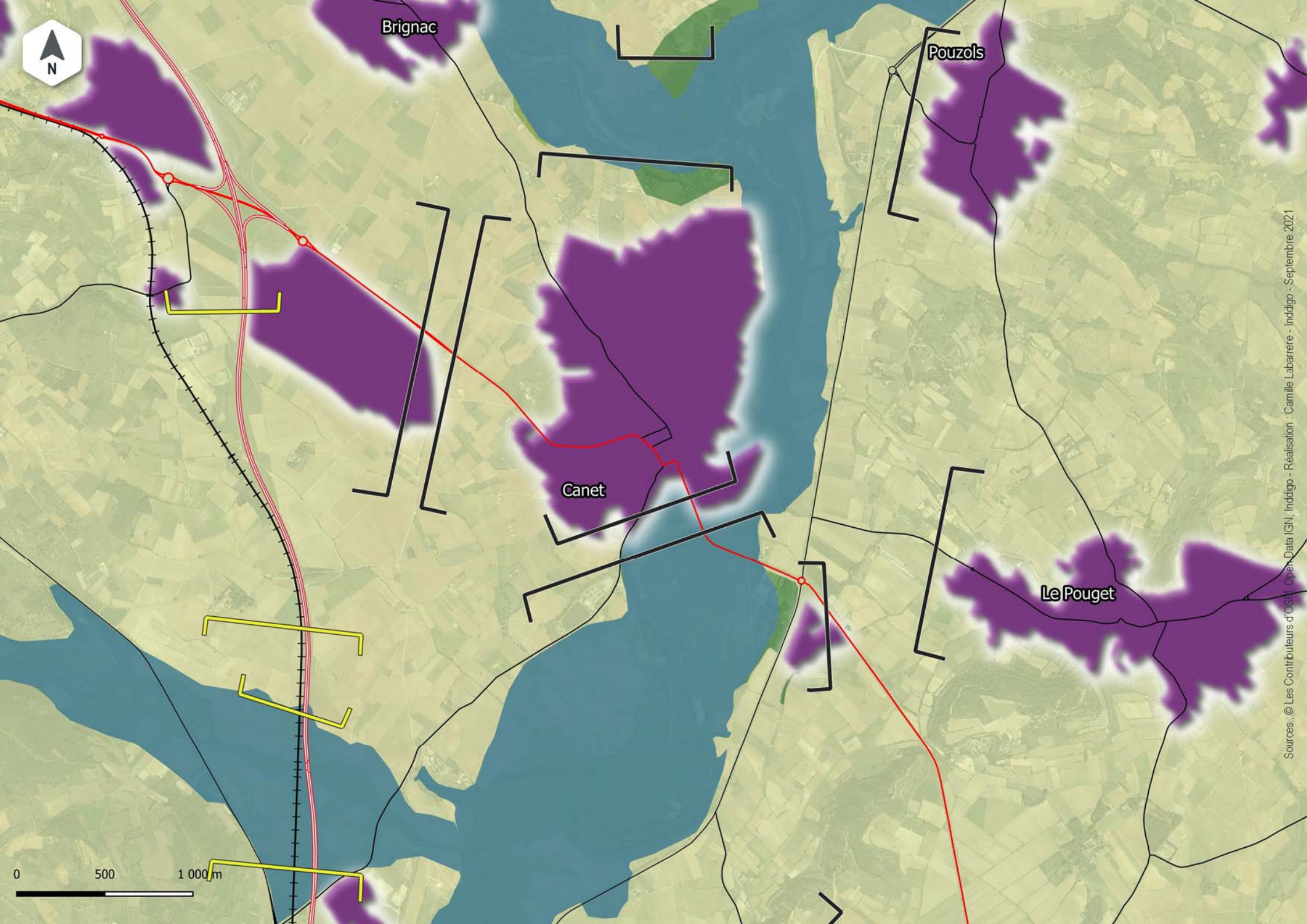
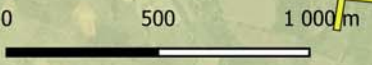


Brignac

Pouzols

Canet

Le Pouget





Aspiran

Tressan

Puilacher

Plaisan

Bélarga

Paulhan

Campagnan

